



Resizing Instructions for Lightroom Classic CC

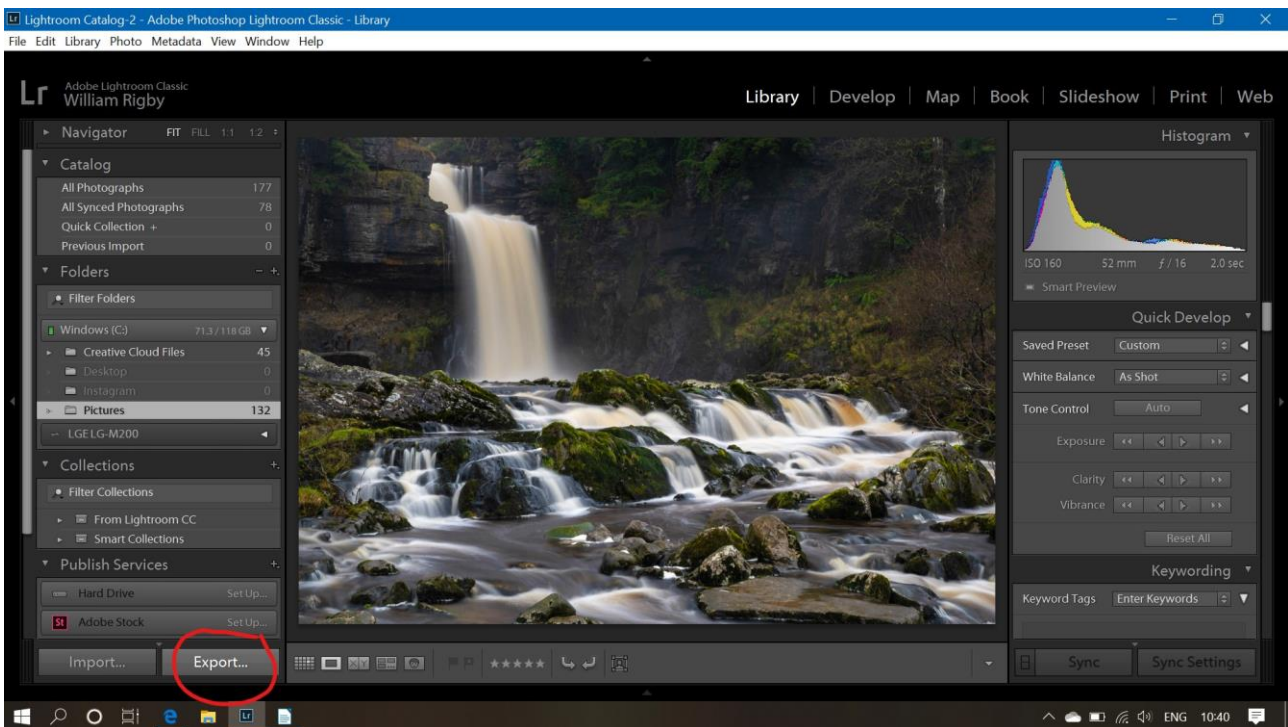
Please ignore all previous instructions concerning resizing of images. Instead please adopt the following procedure:

The following relates to Lightroom Classic CC but there should be similar controls in other photo editing software.

The main difference between the following and previous instructions is that there is now no need to provide black borders (by adjusting canvas size) that would otherwise have been necessary for an exact 1024 (wide) x 768 (tall) pixels image. Images must be within those dimensions but need not be to the exact size.

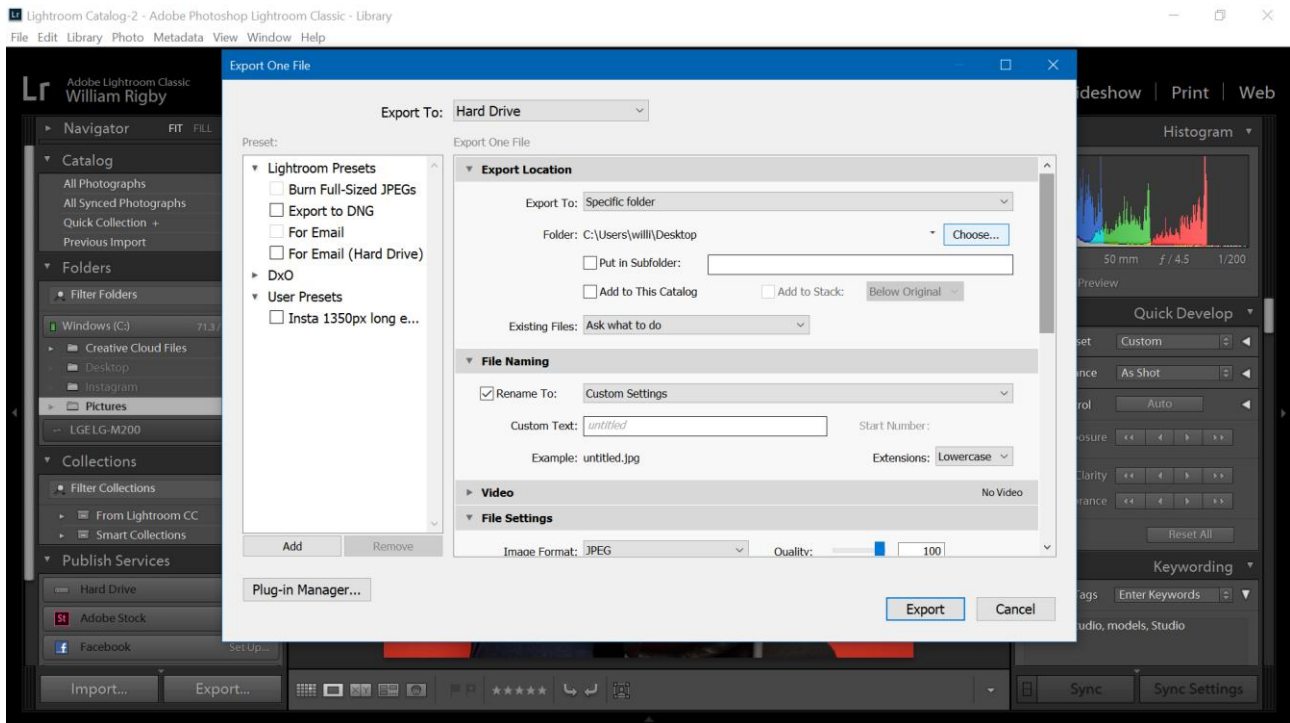
With the chosen image selected,

In the Library module click on 'Export'





When the screen below opens, pick a destination to save the resized image. The following shows saving to hard drive but it could equally be saved to a USB drive.



File naming:

Rename the file (or rename it later before submitting to the club). I would recommend not renaming the file at this stage if you intend to use a preset in future (see further below).

File Settings:

- 1) Ensure JPEG is selected in the drop-down box.
- 2) The Quality is best set to 100
- 3) Colour (color) space must be set to sRGB
- 4) No need to limit the file size as the resized image will be small enough.



Lightroom Catalog 2 - Adobe Photoshop Lightroom Classic - Library
File Edit Library Photo Metadata View Window Help

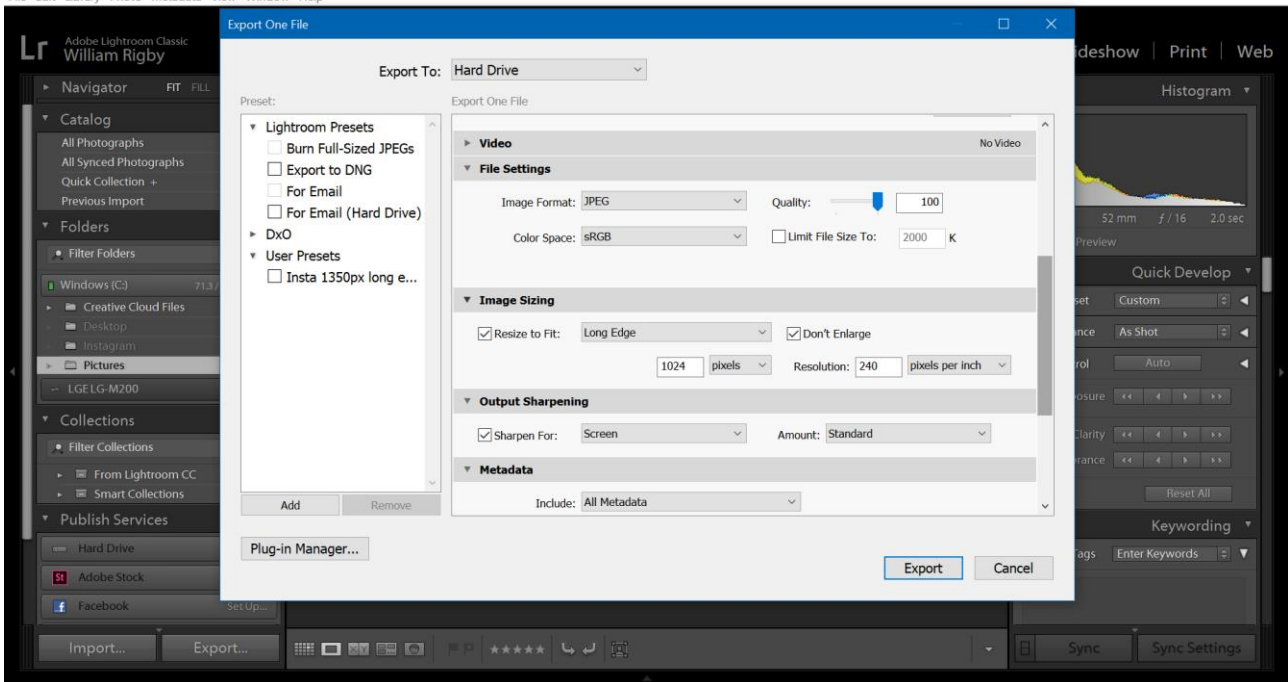


Image Sizing:

'Landscape format'

If your re-sizing a horizontal (or 'landscape' format) image, tick the set the 'resize to fit' box and below that, in the drop-down box, select pixels and in the space provided type 1028.

'Portrait format'

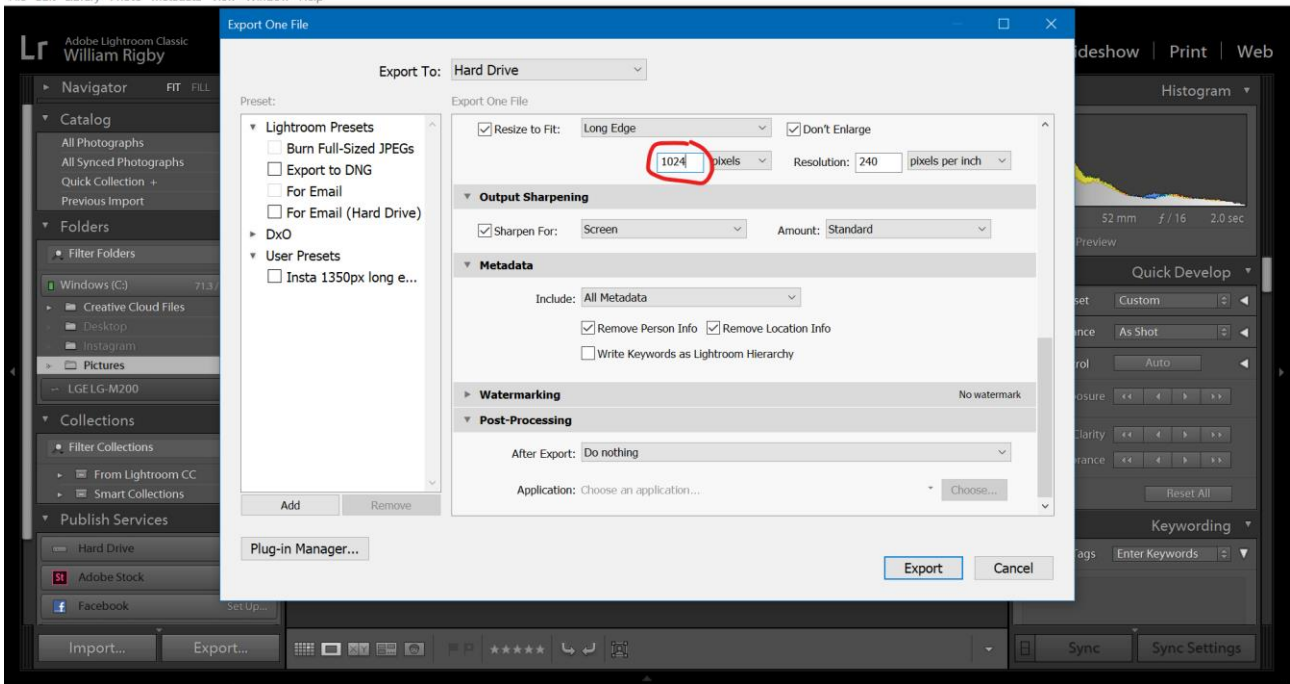
If your re-sizing a vertical (or 'portrait' format) image, tick the set the 'resize to fit' box and from the drop-down box choose 'Long Edge'. Below that, in the drop-down box, select pixels and in the space provided type 768.

Resolution – 240 pixels per inch seems to be standard (*but if you're resizing something for printing check the requirements of your printer or printing company*).

Landscape:

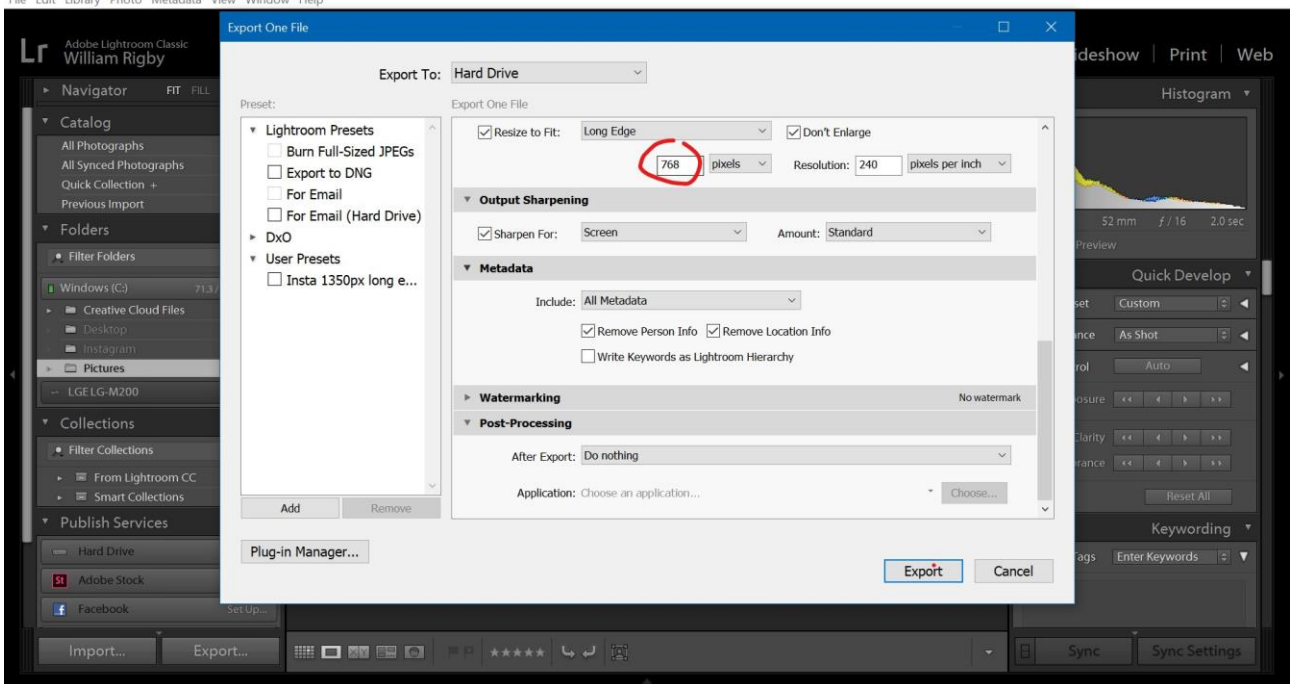


Lightroom Catalog-2 - Adobe Photoshop Lightroom Classic - Library
File Edit Library Photo Metadata View Window Help



Portrait:

Lightroom Catalog-2 - Adobe Photoshop Lightroom Classic - Library
File Edit Library Photo Metadata View Window Help



Square:

Please treat square images as though 'portrait' format – so size long edge to 768 pixels.





Output Sharpening:

Your choice, but sharpen for screen is usually a good option.

Metadata:

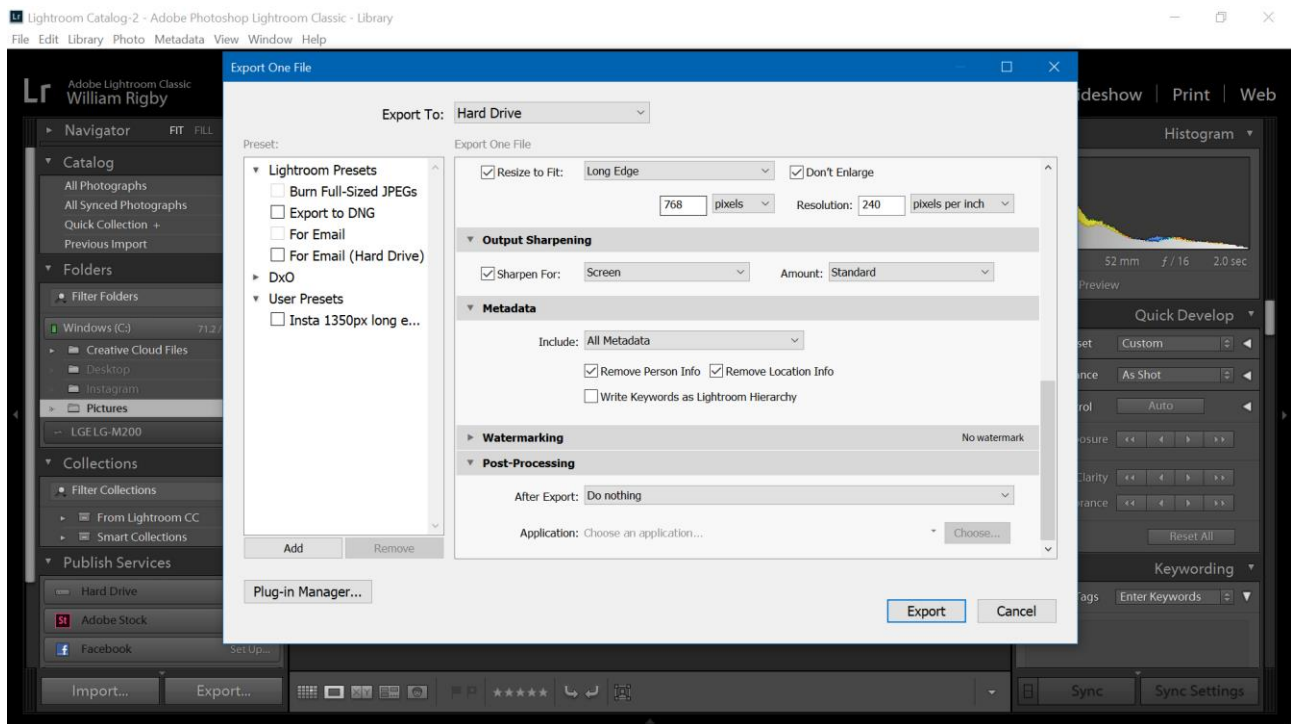
From the drop-down box please choose to include all Metadata.

Watermarking:

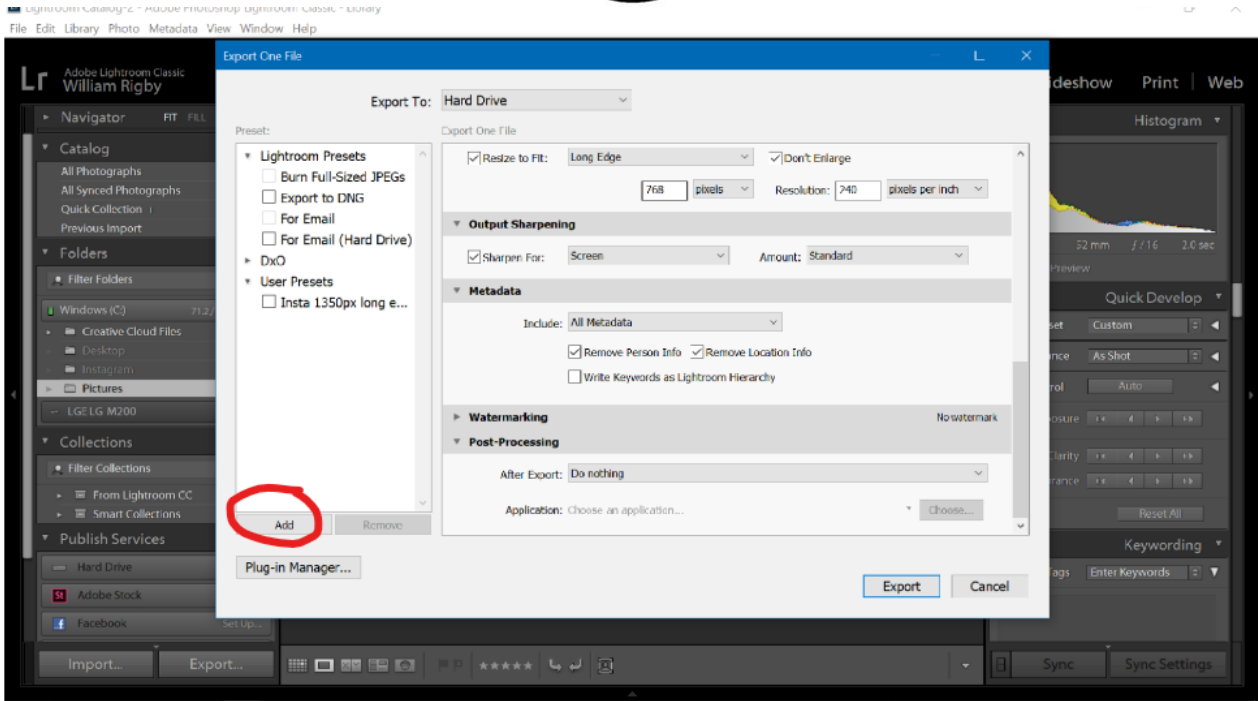
No watermarks please. (Definitely not for competitions.)

Post-Processing:

Entirely a matter for you.

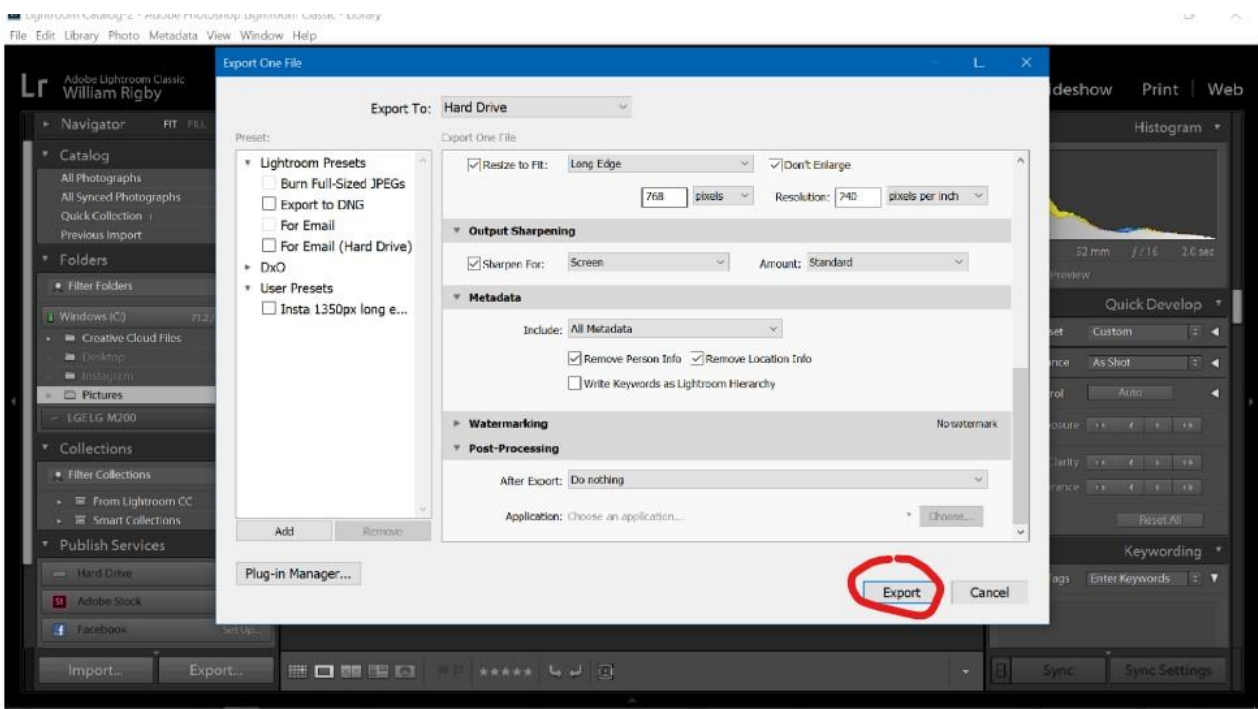


NB. Before you press the export button consider saving these settings as a preset so you don't have to do it all again, manually, next time. You will need separate presets for 'landscape' and 'portrait' formats. So, once you've prepared the image click 'Add'



Then, when prompted, name the preset – something like LPS Landscape. When you want an image resizing to these dimensions in future all you will then have to do is select the preset and then export the resized image.

The finally, click Export



NB. Please ensure you do not save the resized image over the original!